

# ENGLISH MEADOWS

CENTER OF SECTION 21,  
T3N, R2W (L. 7, P. 282)

A SUBDIVISION OF A PART OF THE SE 1/4 OF SECTION 21, T3N, R2W, DELHI TOWNSHIP, INGHAM COUNTY, MICHIGAN

E 1/4 CORNER,  
SECTION 21, T3N, R2W  
(L. 1, P. 101)

EAST-WEST 1/4 LINE, SECTION 21 2655.85

N 89° 45' 40" E 2655.85

N 89° 41' 54" E 659.44

N 89° 41' 54" E 73.58

N 89° 41' 54" E 77.89

N 89° 41' 54" E 84.16

N 89° 41' 54" E 84.98

N 89° 41' 54" E 84.98

N 89° 41' 54" E 84.98

N 89° 41' 54" E 84.98

N 89° 41' 54" E 84.98

N 89° 41' 54" E 84.98

N 89° 41' 54" E 84.98

N 89° 41' 54" E 84.98

N 89° 41' 54" E 84.98

N 89° 41' 54" E 84.98

N 89° 41' 54" E 84.98

N 89° 41' 54" E 84.98

N 89° 41' 54" E 84.98

N 89° 41' 54" E 84.98

N 89° 41' 54" E 84.98

N 89° 41' 54" E 84.98

N 89° 41' 54" E 84.98

N 89° 41' 54" E 84.98

N 89° 41' 54" E 84.98

N 89° 41' 54" E 84.98

N 89° 41' 54" E 84.98

N 89° 41' 54" E 84.98

N 89° 41' 54" E 84.98

N 89° 41' 54" E 84.98

N 89° 41' 54" E 84.98

N 89° 41' 54" E 84.98

N 89° 41' 54" E 84.98

N 89° 41' 54" E 84.98

N 89° 41' 54" E 84.98

N 89° 41' 54" E 84.98

N 89° 41' 54" E 84.98

N 89° 41' 54" E 84.98

N 89° 41' 54" E 84.98

N 89° 41' 54" E 84.98

N 89° 41' 54" E 84.98

N 89° 41' 54" E 84.98

N 89° 41' 54" E 84.98

N 89° 41' 54" E 84.98

N 89° 41' 54" E 84.98

N 89° 41' 54" E 84.98

N 89° 41' 54" E 84.98

N 89° 41' 54" E 84.98

N 89° 41' 54" E 84.98

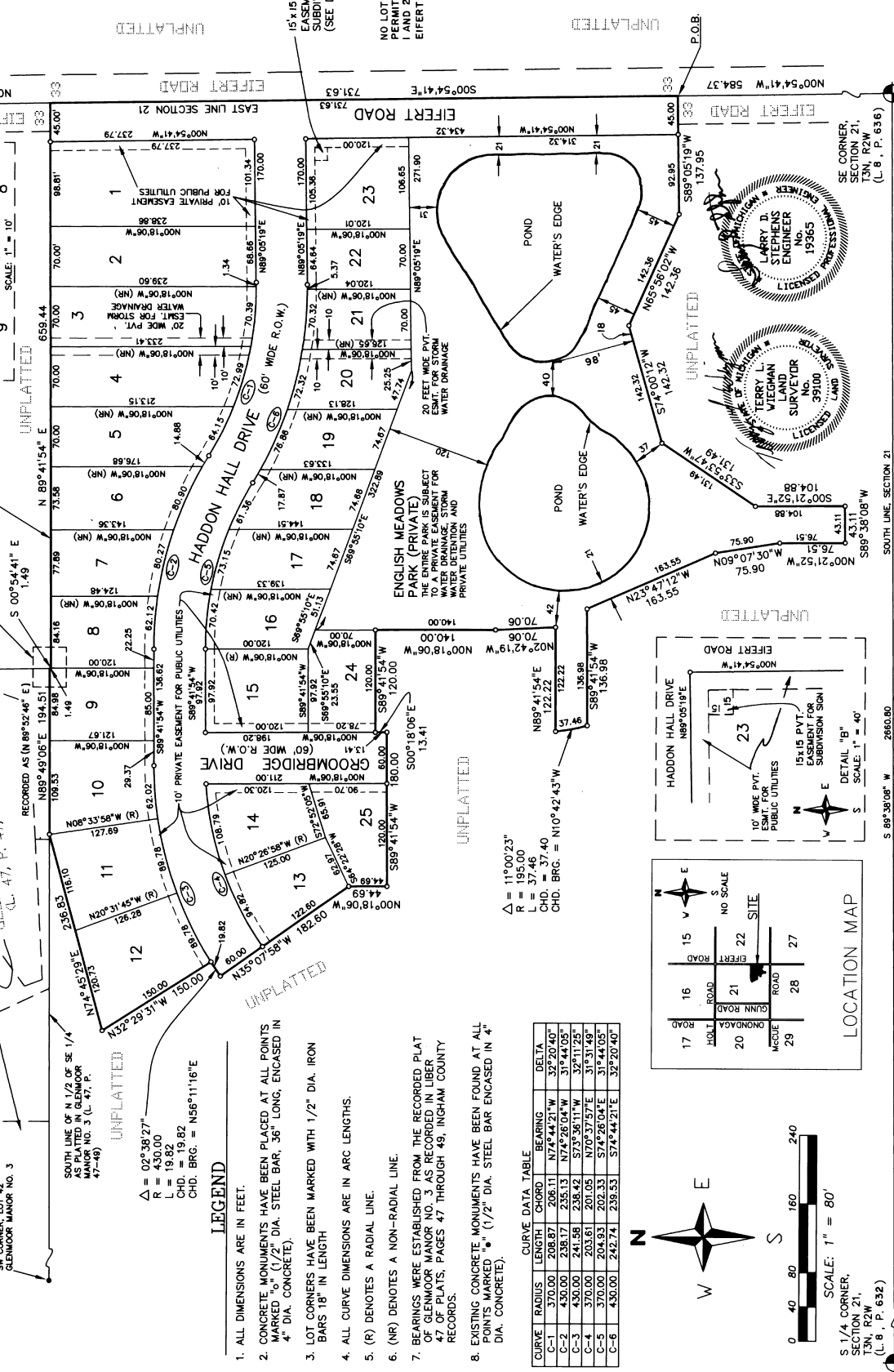
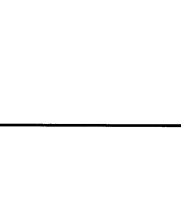
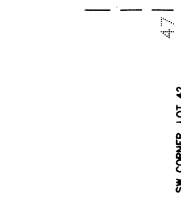
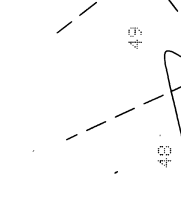
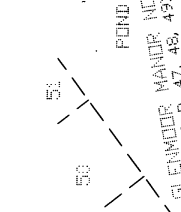
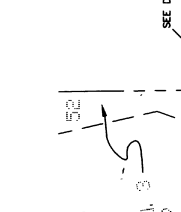
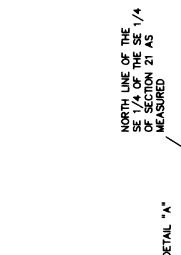
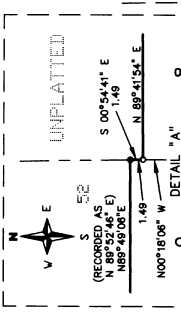
N 89° 41' 54" E 84.98

N 89° 41' 54" E 84.98

N 89° 41' 54" E 84.98

N 89° 41' 54" E 84.98

N 89° 41' 54" E 84.98



SW CORNER, LOT 42,  
GLENMOOR MANOR NO. 3  
(L. 47, P. 47-48)

SOUTH LINE OF N 1/2 OF SE 1/4  
AS PLATTED IN GLENMOOR  
MANOR NO. 3 (L. 47, P.  
47-48)

RECORDED AS (N 89° 52' 46" E)  
N 89° 49' 06" E 194.51  
L = 19.82  
CHD. BRG. = N 86° 11' 16" E

Δ = 0° 38' 27"  
R = 430.00  
L = 19.82  
CHD. BRG. = N 86° 11' 16" E

SEE DETAIL "A"  
S 00° 54' 41" E  
1.49  
N 00° 18' 06" W  
120.00

RECORDED AS (N 89° 52' 46" E)  
N 89° 49' 06" E 194.51  
L = 19.82  
CHD. BRG. = N 86° 11' 16" E

Δ = 0° 38' 27"  
R = 430.00  
L = 19.82  
CHD. BRG. = N 86° 11' 16" E

SEE DETAIL "A"  
S 00° 54' 41" E  
1.49  
N 00° 18' 06" W  
120.00

RECORDED AS (N 89° 52' 46" E)  
N 89° 49' 06" E 194.51  
L = 19.82  
CHD. BRG. = N 86° 11' 16" E

Δ = 0° 38' 27"  
R = 430.00  
L = 19.82  
CHD. BRG. = N 86° 11' 16" E

SEE DETAIL "A"  
S 00° 54' 41" E  
1.49  
N 00° 18' 06" W  
120.00

RECORDED AS (N 89° 52' 46" E)  
N 89° 49' 06" E 194.51  
L = 19.82  
CHD. BRG. = N 86° 11' 16" E

Δ = 0° 38' 27"  
R = 430.00  
L = 19.82  
CHD. BRG. = N 86° 11' 16" E

SEE DETAIL "A"  
S 00° 54' 41" E  
1.49  
N 00° 18' 06" W  
120.00

RECORDED AS (N 89° 52' 46" E)  
N 89° 49' 06" E 194.51  
L = 19.82  
CHD. BRG. = N 86° 11' 16" E

Δ = 0° 38' 27"  
R = 430.00  
L = 19.82  
CHD. BRG. = N 86° 11' 16" E

SEE DETAIL "A"  
S 00° 54' 41" E  
1.49  
N 00° 18' 06" W  
120.00

RECORDED AS (N 89° 52' 46" E)  
N 89° 49' 06" E 194.51  
L = 19.82  
CHD. BRG. = N 86° 11' 16" E

Δ = 0° 38' 27"  
R = 430.00  
L = 19.82  
CHD. BRG. = N 86° 11' 16" E

SEE DETAIL "A"  
S 00° 54' 41" E  
1.49  
N 00° 18' 06" W  
120.00

RECORDED AS (N 89° 52' 46" E)  
N 89° 49' 06" E 194.51  
L = 19.82  
CHD. BRG. = N 86° 11' 16" E

Δ = 0° 38' 27"  
R = 430.00  
L = 19.82  
CHD. BRG. = N 86° 11' 16" E

SEE DETAIL "A"  
S 00° 54' 41" E  
1.49  
N 00° 18' 06" W  
120.00

RECORDED AS (N 89° 52' 46" E)  
N 89° 49' 06" E 194.51  
L = 19.82  
CHD. BRG. = N 86° 11' 16" E

Δ = 0° 38' 27"  
R = 430.00  
L = 19.82  
CHD. BRG. = N 86° 11' 16" E

SEE DETAIL "A"  
S 00° 54' 41" E  
1.49  
N 00° 18' 06" W  
120.00

RECORDED AS (N 89° 52' 46" E)  
N 89° 49' 06" E 194.51  
L = 19.82  
CHD. BRG. = N 86° 11' 16" E

Δ = 0° 38' 27"  
R = 430.00  
L = 19.82  
CHD. BRG. = N 86° 11' 16" E

SEE DETAIL "A"  
S 00° 54' 41" E  
1.49  
N 00° 18' 06" W  
120.00

RECORDED AS (N 89° 52' 46" E)  
N 89° 49' 06" E 194.51  
L = 19.82  
CHD. BRG. = N 86° 11' 16" E

Δ = 0° 38' 27"  
R = 430.00  
L = 19.82  
CHD. BRG. = N 86° 11' 16" E

SEE DETAIL "A"  
S 00° 54' 41" E  
1.49  
N 00° 18' 06" W  
120.00

RECORDED AS (N 89° 52' 46" E)  
N 89° 49' 06" E 194.51  
L = 19.82  
CHD. BRG. = N 86° 11' 16" E

Δ = 0° 38' 27"  
R = 430.00  
L = 19.82  
CHD. BRG. = N 86° 11' 16" E

SEE DETAIL "A"  
S 00° 54' 41" E  
1.49  
N 00° 18' 06" W  
120.00

RECORDED AS (N 89° 52' 46" E)  
N 89° 49' 06" E 194.51  
L = 19.82  
CHD. BRG. = N 86° 11' 16" E

Δ = 0° 38' 27"  
R = 430.00  
L = 19.82  
CHD. BRG. = N 86° 11' 16" E

SEE DETAIL "A"  
S 00° 54' 41" E  
1.49  
N 00° 18' 06" W  
120.00

RECORDED AS (N 89° 52' 46" E)  
N 89° 49' 06" E 194.51  
L = 19.82  
CHD. BRG. = N 86° 11' 16" E

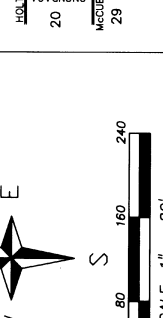
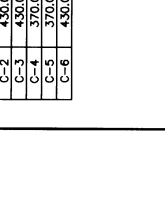
Δ = 0° 38' 27"  
R = 430.00  
L = 19.82  
CHD. BRG. = N 86° 11' 16" E

## LEGEND

- ALL DIMENSIONS ARE IN FEET.
- CONCRETE MONUMENTS HAVE BEEN PLACED AT ALL POINTS MARKED "C" (1/2" DIA. STEEL BAR, 36" LONG, ENCASED IN 4" DIA. CONCRETE).
- LOT CORNERS HAVE BEEN MARKED WITH 1/2" DIA. IRON BARS 18" IN LENGTH.
- ALL CURVE DIMENSIONS ARE IN ARC LENGTHS.
- (R) DENOTES A RADIAL LINE.
- (NR) DENOTES A NON-RADIAL LINE.
- BEARINGS WERE ESTABLISHED FROM THE RECORDED PLAT OF GLENMOOR MANOR NO. 3 AS RECORDED IN LIBER 300 PLATS, PAGES 47 THROUGH 49, INGHAM COUNTY RECORDS.
- EXISTING CONCRETE MONUMENTS HAVE BEEN FOUND AT ALL POINTS MARKED "M" (1/2" DIA. STEEL BAR ENCASED IN 4" DIA. CONCRETE).

CURVE DATA TABLE

CURVE	RADIUS	LENGTH	CHORD	BEARING	DELTA
C-1	370.00	208.87	206.11	N74°44'21"W	32°20'40"
C-2	430.00	238.17	235.13	N74°26'04"W	31°44'05"
C-3	430.00	241.58	238.42	S73°56'11"W	32°11'25"
C-4	370.00	203.61	201.05	N70°37'57"E	31°31'48"
C-5	370.00	204.93	202.33	S74°26'04"E	31°44'05"
C-6	430.00	242.74	239.53	S74°44'21"E	32°20'40"



S 1/4 CORNER,  
SECTION 21,  
T3N, R2W  
(L. 8, P. 632)

S 1/4 CORNER,  
SECTION 21,  
T3N, R2W  
(L. 8, P. 636)

S 89° 39' 08" W 2660.80