

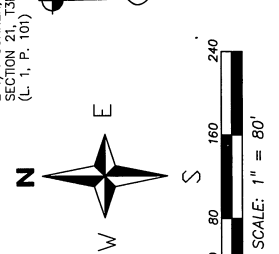
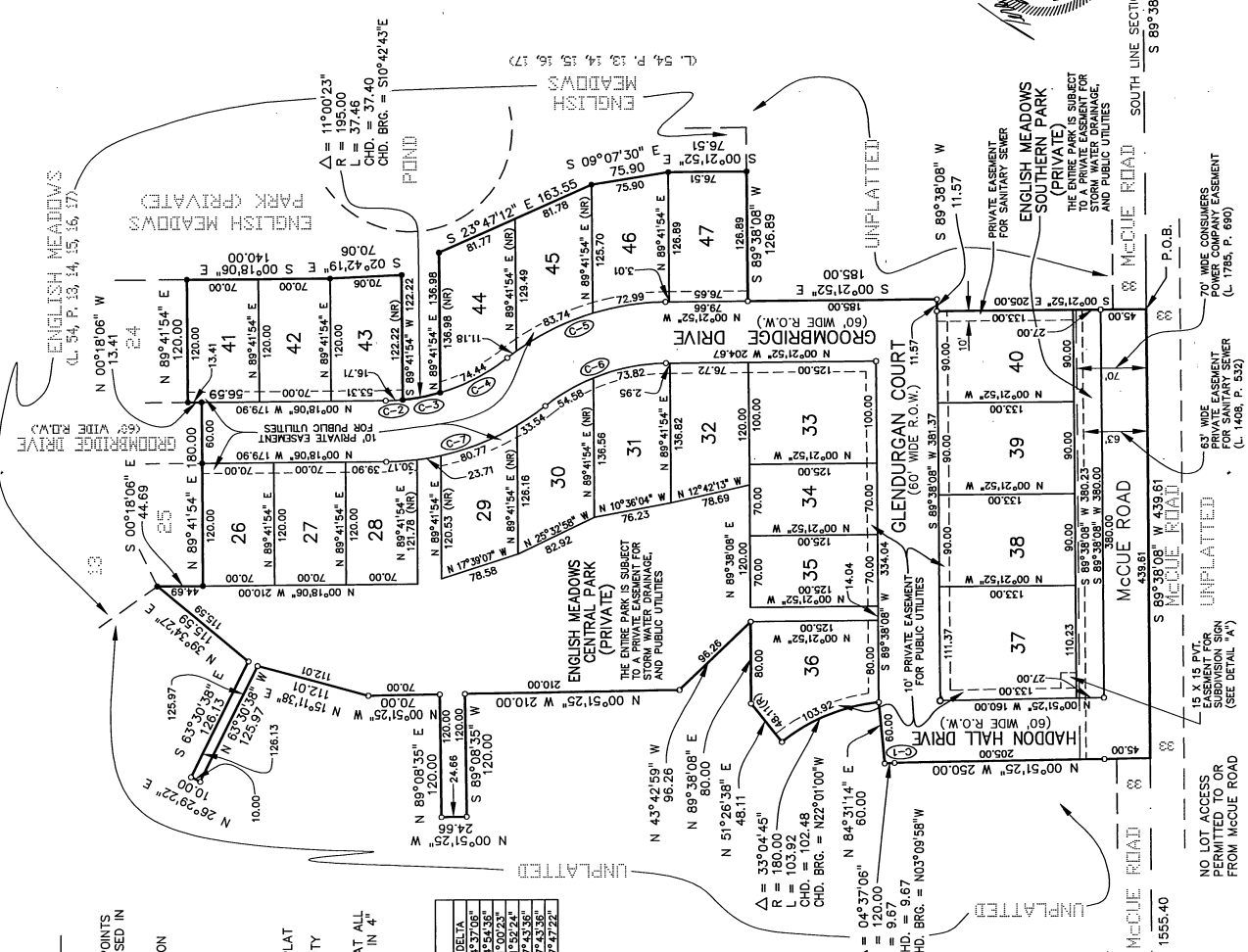
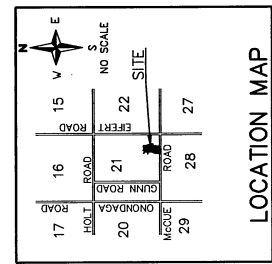
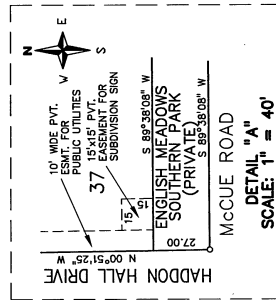
ENGLISH MEADOWS NO. 2

A SUBDIVISION OF A PART OF THE SE 1/4 OF SECTION 21, T3N, R2W, DELHI TOWNSHIP, INGHAM COUNTY, MICHIGAN

LEGEND

- ALL DIMENSIONS ARE IN FEET.
- CONCRETE MONUMENTS HAVE BEEN PLACED AT ALL POINTS MARKED "C" (1/2" DIA. STEEL BAR, 36" LONG, ENCASED IN 4" DIA. CONCRETE).
- LOT CORNERS HAVE BEEN MARKED WITH 1/2" DIA. IRON BARS 18" IN LENGTH
- ALL CURVE DIMENSIONS ARE IN ARC LENGTHS.
- (R) DENOTES A RADIAL LINE.
- (NR) DENOTES A NON-RADIAL LINE.
- BEARINGS WERE ESTABLISHED FROM THE RECORDED PLAT OF ENGLISH MEADOWS AS RECORDED IN LIBER 54 OF PLATS, PAGES 13 THROUGH 17, INGHAM COUNTY RECORDS.
- EXISTING CONCRETE MONUMENTS HAVE BEEN FOUND AT ALL POINTS MARKED "C" (1/2" DIA. STEEL BAR ENCASED IN 4" DIA. CONCRETE).

CURVE	RADIUS	CHORD	BEARING	DELTA
C-1	120.00	9.67	N 03°10'01" W	04°37'08"
C-2	195.00	16.71	S 02°55'24" E	04°54'38"
C-3	195.00	37.46	S 10°22'53" E	11°00'23"
C-4	255.00	167.91	N 16°18'00" E	37°43'36"
C-5	195.00	128.40	N 18°13'40" W	37°43'36"
C-7	255.00	168.19	N 18°11'47" W	37°47'22"



SE CORNER, SECTION 21, T3N, R2W (L. 8, P. 636)

66744

ENGINEER
LARRY D. STEPHENS
No. 19365
PROFESSOR OF LAND SURVEYING

LAND SURVEYOR
TERRY L. VIEGHAN
No. 39100
PROFESSOR OF LAND SURVEYING